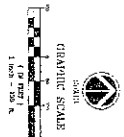
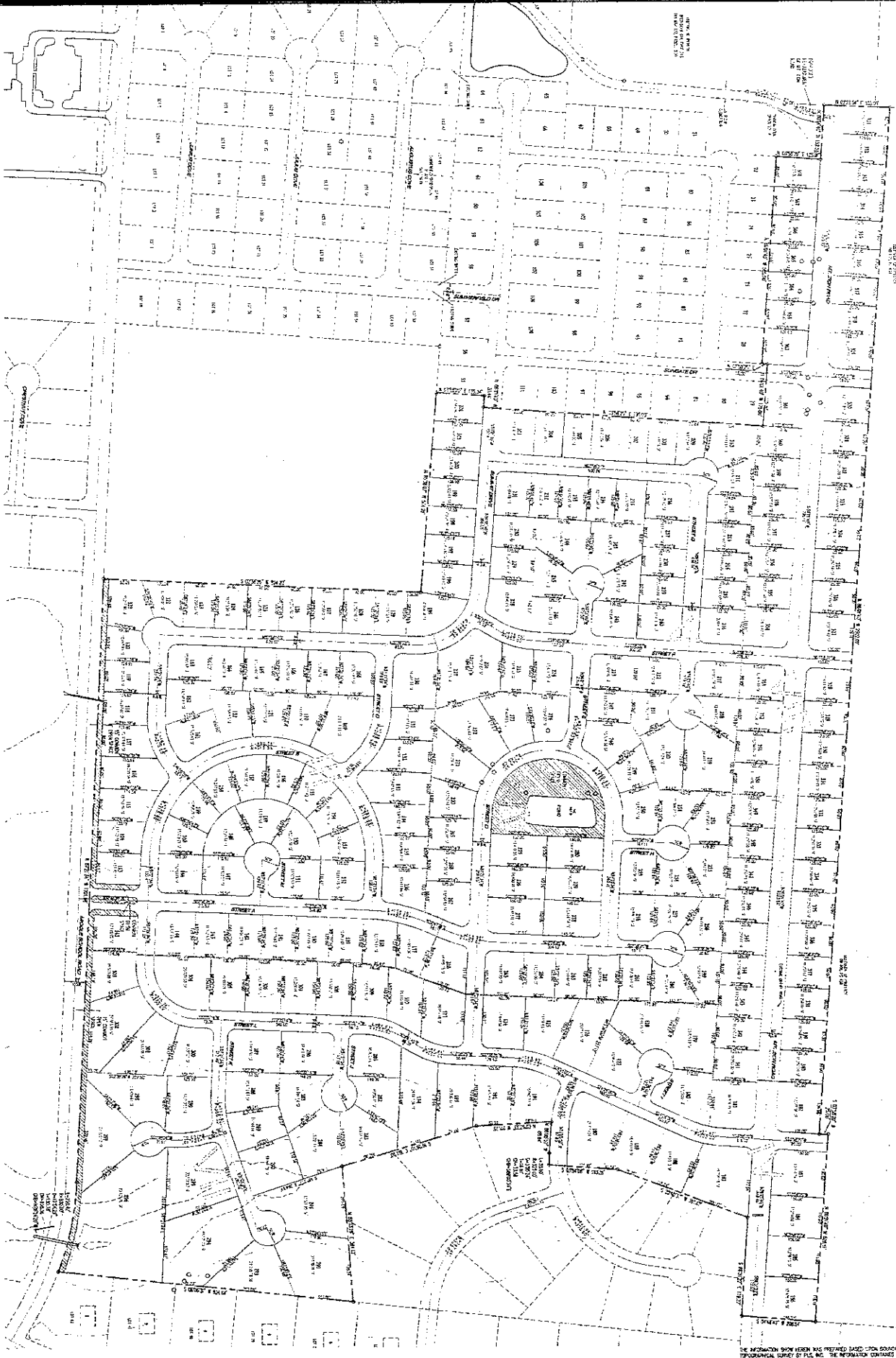


**GENERAL DATA**

TOTAL AREA OF PROJECT 102.28 ACRES  
 TOTAL NUMBER OF LOTS 277  
 TOTAL DENSITY 2.67 UNITS/ACRE  
 ROAD DESIGN R1A  
 LOT AREA 89,742 SQ. FT.  
 LOT WIDTH 30 FEET  
 LOT DEPTH 295 FEET  
 LOT AREA 26,250 SQ. FT.

**PHASING DATA**

PHASE I 20 LOTS  
 PHASE II 52 LOTS  
 PHASE III 34 LOTS  
 PHASE IV 31 LOTS  
 PHASE V 50 LOTS



THE INFORMATION SHOWN HEREIN HAS BEEN PREPARED BASED UPON EXAMINATION AND PROFESSIONAL JUDGMENT BY P.E. AND L.P.E. THE INFORMATION CONTAINED HEREIN IS TO BE USED AS A PLANNING TOOL ONLY AND IS SUBJECT TO GOVERNMENT APPROVAL. NO WARRANTY OR REPRESENTATION IS EXPRESSED OR IMPLIED. DOCUMENT IS THE PROPERTY OF MCGUIRE ENGINEERING, LLC AND MAY NOT BE REPRODUCED WITHOUT PRIOR CONSENT.

**DEVELOPER**  
 CLARK FAMILY HOLDINGS, L.L.C.  
 PO BOX 124  
 MEDINA, TN 37055

PRELIMINARY PLAN  
**Summerfield Subdivision**  
 Phase II-770  
 MEDINA, TENNESSEE  
 October, 2006 Scale: 1"=40'

**McGuire Engineering**  
 Civil Engineering - Land Planning  
 114 W. MAIN STREET, SUITE 200  
 P.O. BOX 284, MEDINA, TN 37055